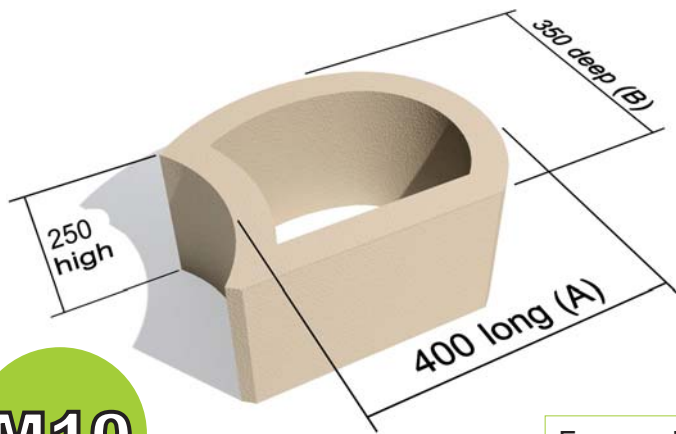


TERRAFORCE®

The original, reversible, hollow core retaining block



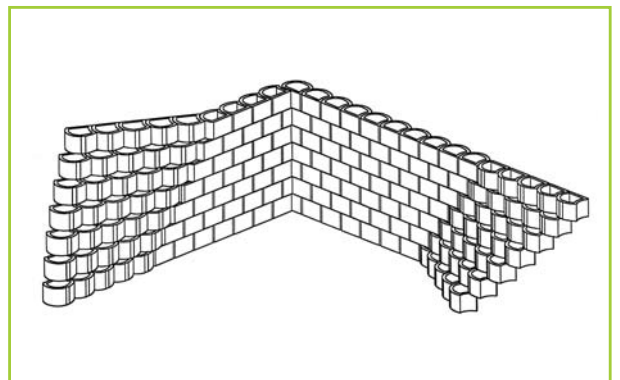
M10

M10 STANDARD

For variations check with your local supplier.



| Block | M10 |
|--|-------|
| Blocks/m ² (Measured vertically) | 10 |
| Block mass/kg (Average) | 36 |
| Block infill volume/m ³ | 0.016 |
| Block wall thickness mm | 50 |
| Ave. constr. mass kg per m² of wall. Single Skin | |
| When filled with topsoil of 1500kg/m ³ | 585 |
| When filled with gravel of 1900kg/m ³ | 664 |
| When filled with concrete of 2400 kg/m ³ | 744 |

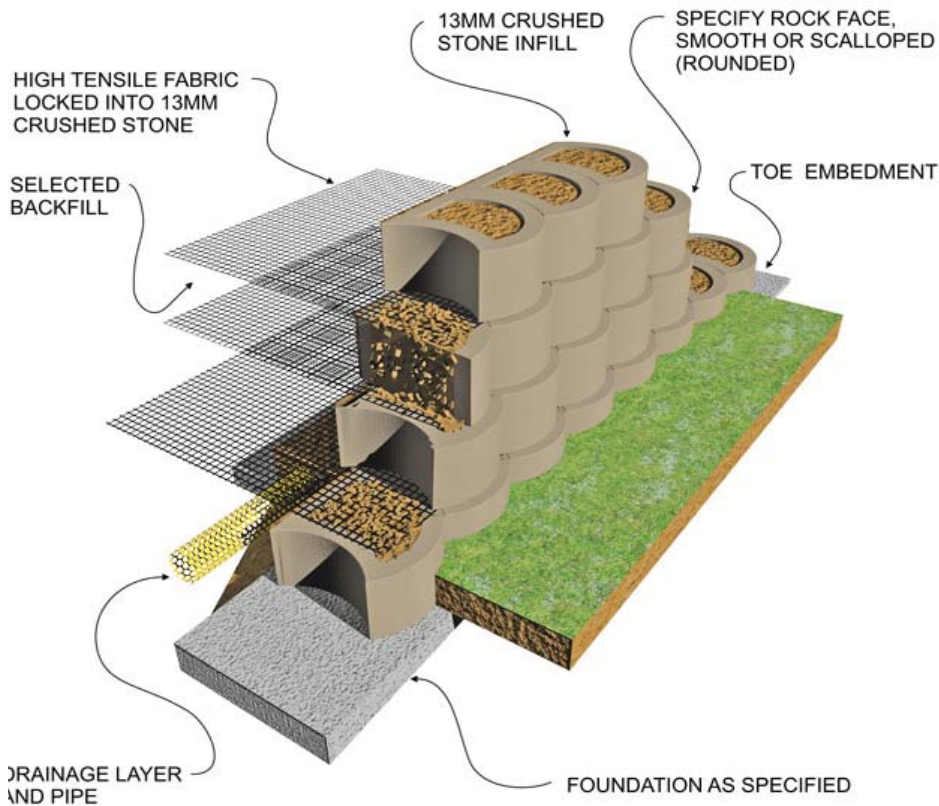


TERRAFORCE

The original, reversible, hollow core retaining block

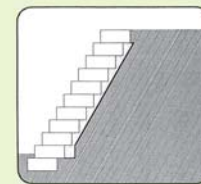


Composite Retaining Wall (Earth Reinforcement with Geogrid)

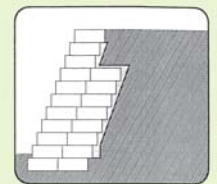


TERRAFORCE blocks have been substantially tested and analysed under field and laboratory conditions and are manufactured under licence by reputable manufacturers on five continents.

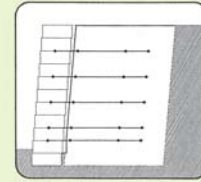
The blocks can be used as part of either a gravity system or as the fascia of a geosynthetic reinforced segmental retaining wall structure or as a fascia for a cement stabilized backfill.



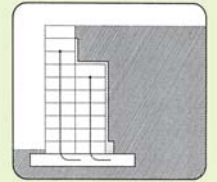
LIGHT GRAVITY WALL



MASS GRAVITY WALL

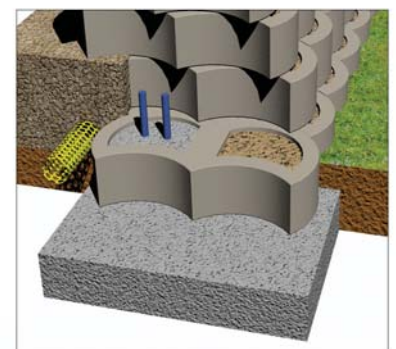
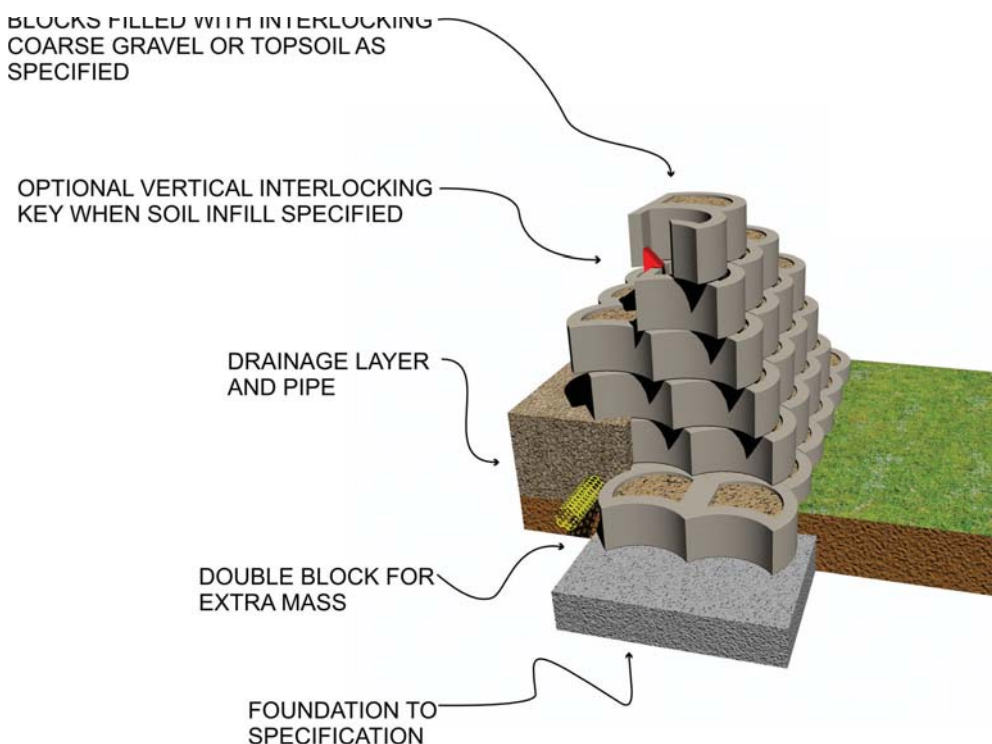


COMPOSITE STRUCTURE



VERTICAL R.C. FILLED WALL

Mass Gravity Retaining Wall



OPTIONAL R.C. INFILL

TERRAFORCE

The original, reversible, hollow core retaining block

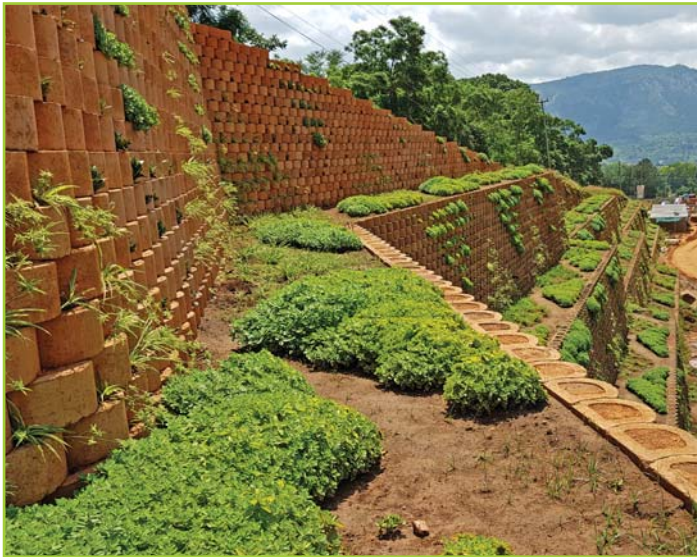
L11



HIGH COMPOSITE RETAINING WALL



CLOVER LEAF INTERCHANGE RETAINING WALL, QATAR



22M HIGH ROUND FACE TERRACES WITH PLANTING



PLANTED WALL AT OFFICE BLOCK PARKING



ROADSIDE RETAINING WALL WITH FULL PLANT COVER



CURVED AND PLANTED WALLS AT SHOPRITE