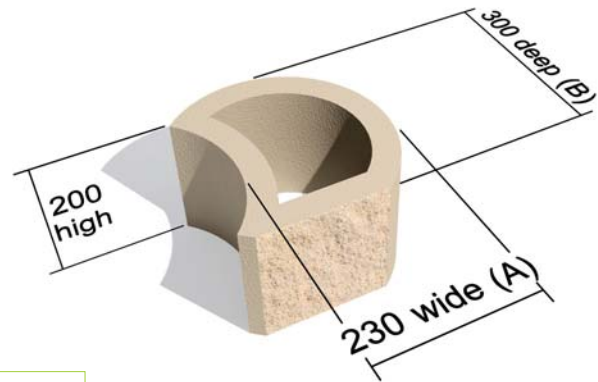
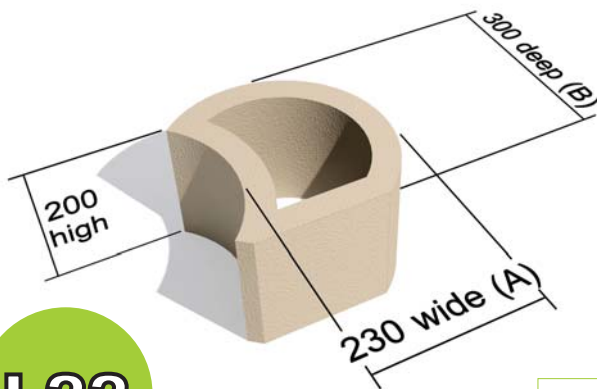


TERRAFORCE®

The original, reversible, hollow core retaining block



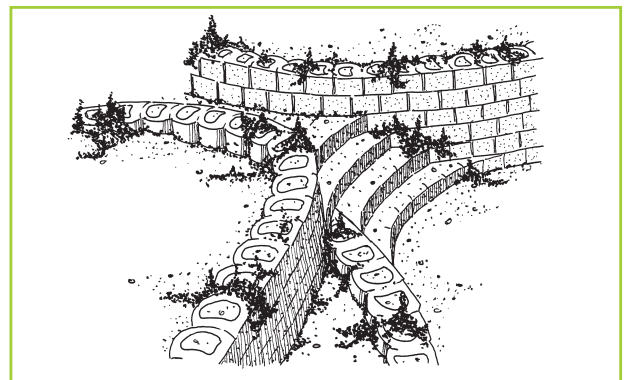
L22

L22 STANDARD

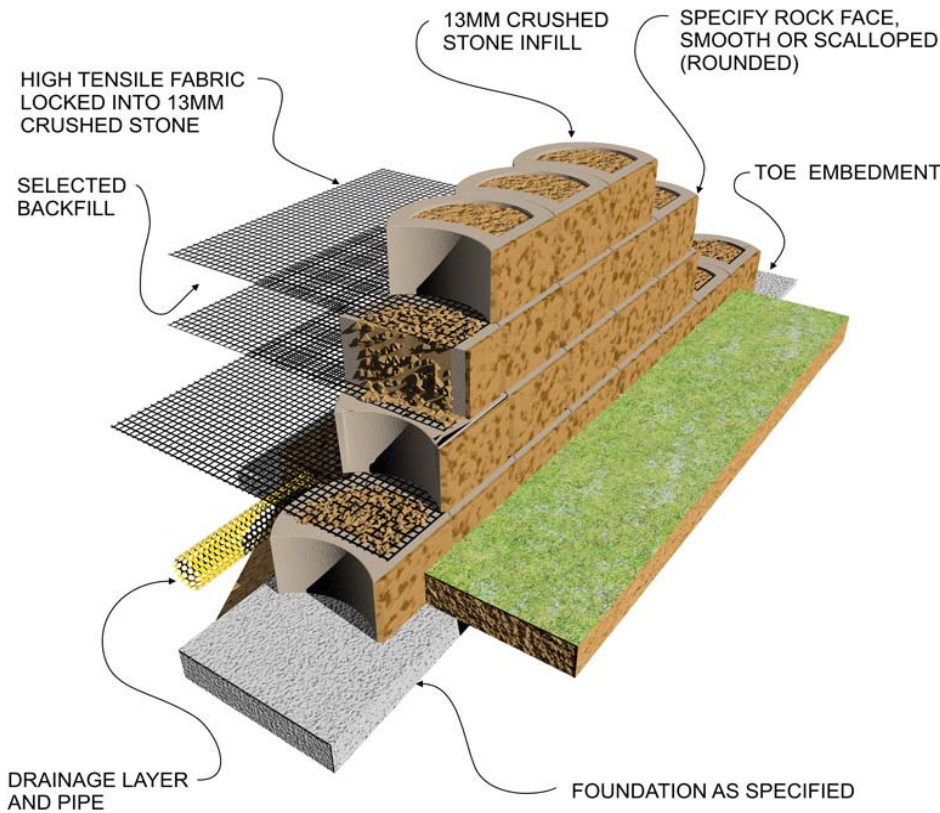
For variations check with your local supplier.

L22 ROCKFACE

| Block | L22 |
|--|-------|
| Blocks/m ² (Measured vertically) | 22 |
| Block mass/kg (Average) | 16 |
| Block infill volume/m ³ | 0.006 |
| Block wall thickness mm | 40 |
| Ave. constr. mass kg per m² of wall. Single Skin | |
| When filled with topsoil of 1500kg/m ³ | 550 |
| When filled with gravel of 1900kg/m ³ | 602 |
| When filled with concrete of 2400 kg/m ³ | 669 |

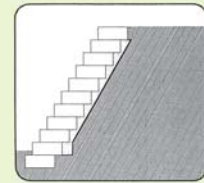


Composite Retaining Wall (Earth Reinforcement with Geogrid)

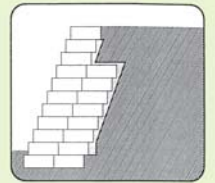


TERRAFORCE blocks have been substantially tested and analysed under field and laboratory conditions and are manufactured under licence by reputable manufacturers on five continents.

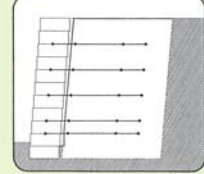
The blocks can be used as part of either a gravity system or as the fascia of a geosynthetic reinforced segmental retaining wall structure or as a fascia for a cement stabilized backfill.



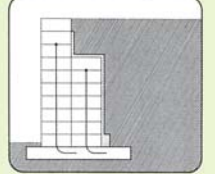
LIGHT GRAVITY WALL



MASS GRAVITY WALL

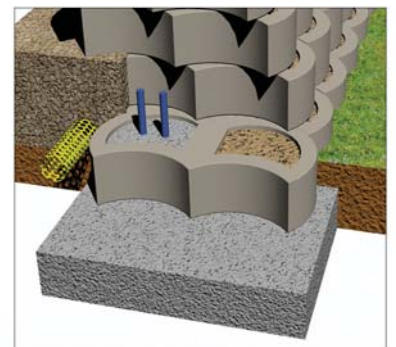
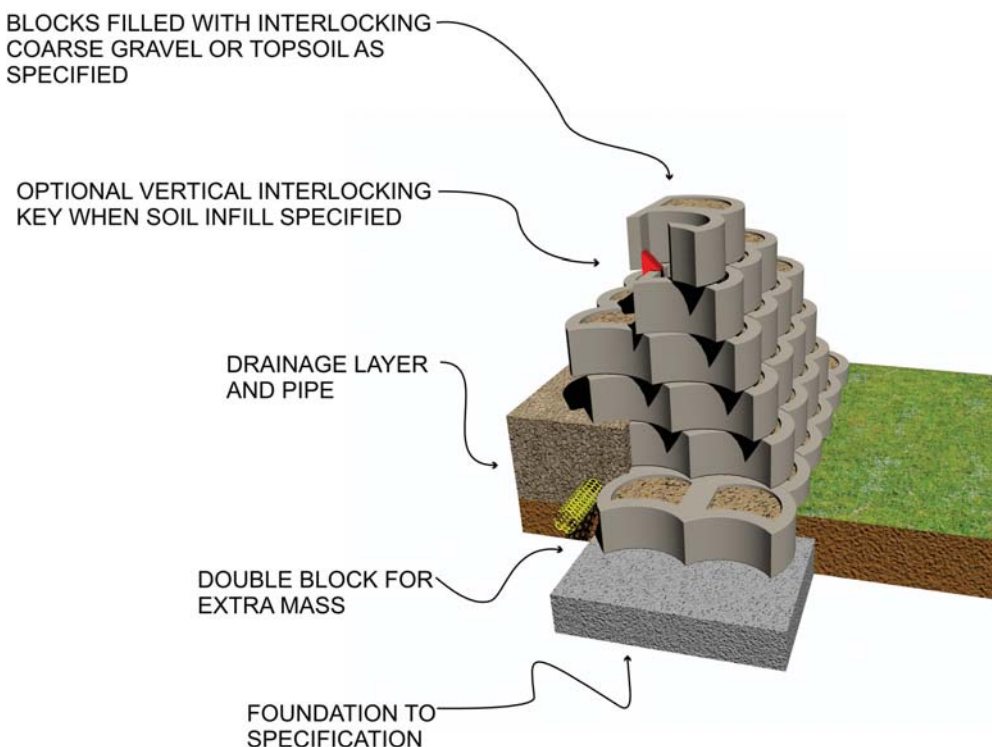


COMPOSITE STRUCTURE



VERTICAL R.C. FILLED WALL

Mass Gravity Retaining Wall



OPTIONAL R.C. INFILL

TERRAFORCE®

The original, reversible, hollow core retaining block

L22



LIGHT RETAINING AND 4X4 STAIRS



DOMESTIC LANDSCAPING



LIGHT EARTH RETAINING IN FULL BLOOM



PLANT SUPPORTIVE SLOPE PROTECTION



DO-IT-YOURSELF INSTALLATION



GREEN SEATING ARENA AND STAIRS