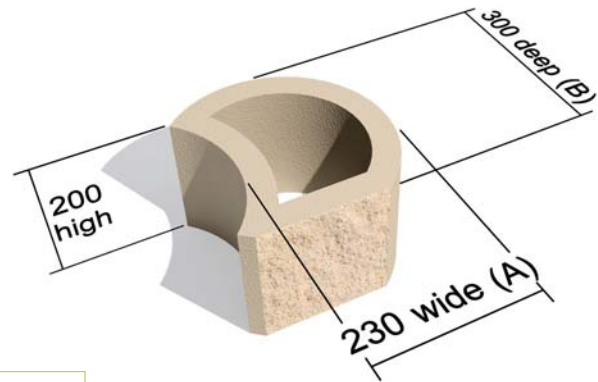
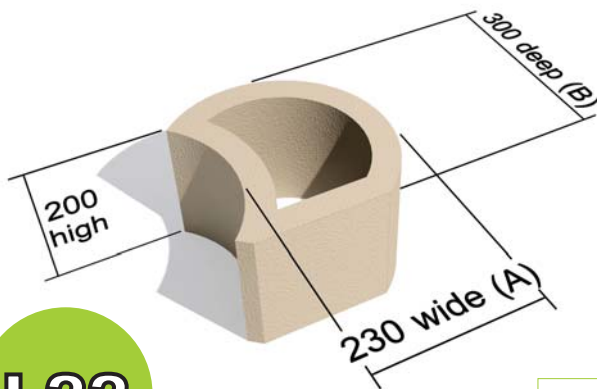


# TERRAFORCE®

The original, reversible, hollow core retaining block



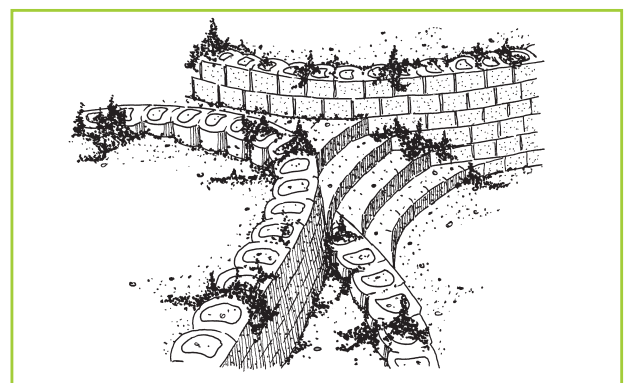
**L22**

L22 STANDARD

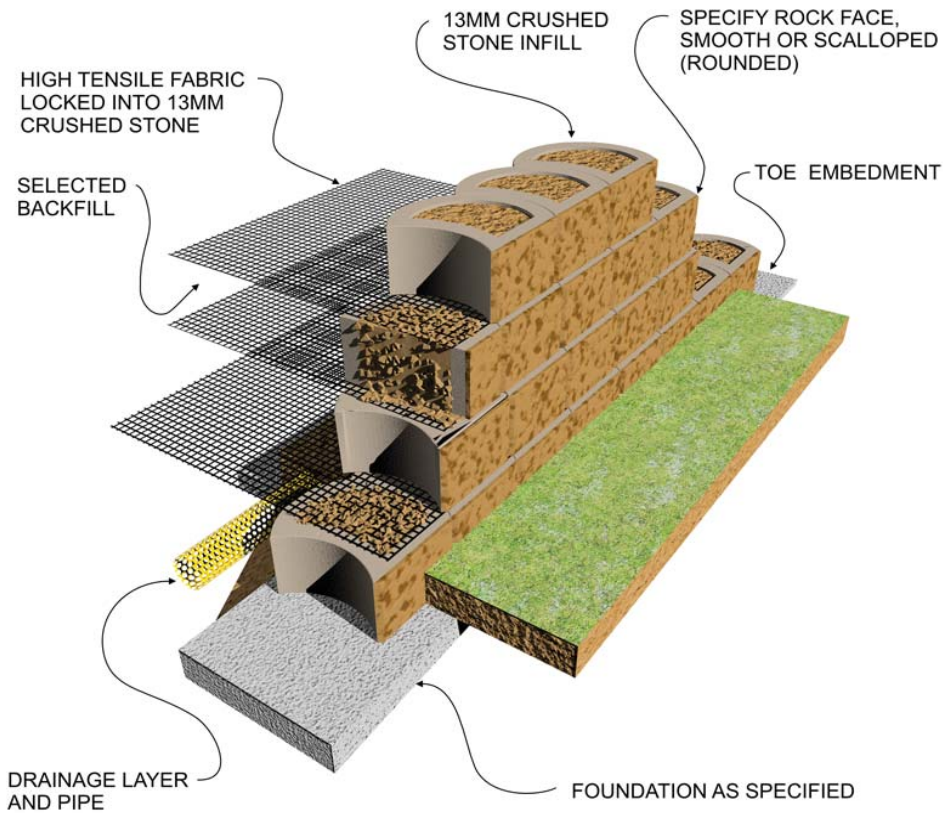
For variations check with your local supplier.

L22 ROCKFACE

Block	L22
Blocks/m <sup>2</sup> (Measured vertically)	22
Block mass/kg (Average)	16
Block infill volume/m <sup>3</sup>	0.006
Block wall thickness mm	40
<b>Ave. constr. mass kg per m<sup>2</sup> of wall. Single Skin</b>	
When filled with topsoil of 1500kg/m <sup>3</sup>	550
When filled with gravel of 1900kg/m <sup>3</sup>	602
When filled with concrete of 2400 kg/m <sup>3</sup>	669

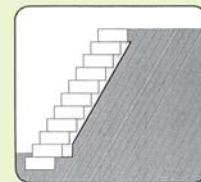


## Composite Retaining Wall (Earth Reinforcement with Geogrid)

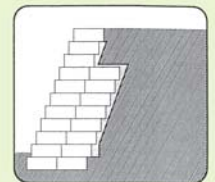


TERRAFORCE blocks have been substantially tested and analysed under field and laboratory conditions and are manufactured under licence by reputable manufacturers on five continents.

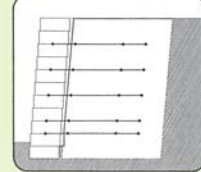
The blocks can be used as part of either a gravity system or as the fascia of a geosynthetic reinforced segmental retaining wall structure or as a fascia for a cement stabilized backfill.



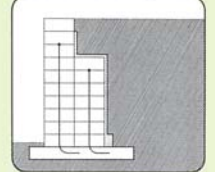
LIGHT GRAVITY WALL



MASS GRAVITY WALL

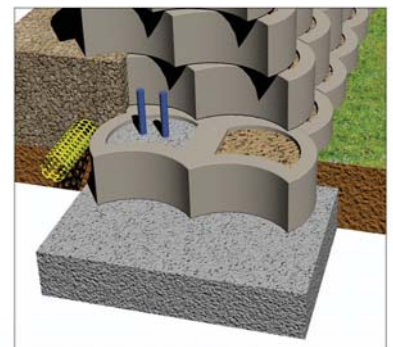
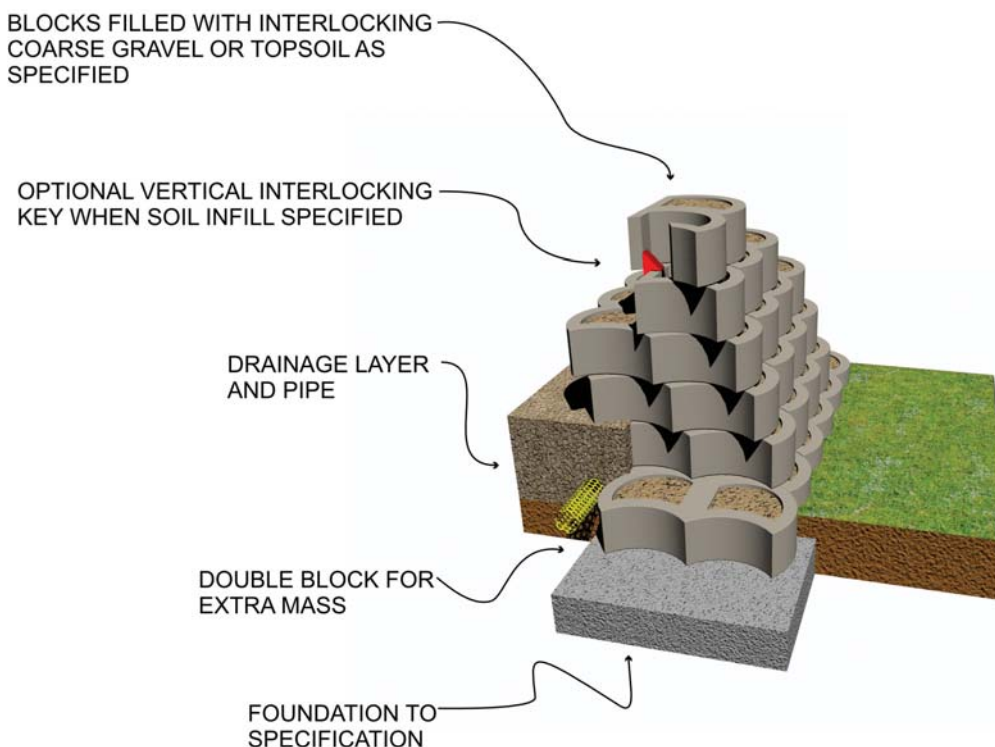


COMPOSITE STRUCTURE



VERTICAL R.C. FILLED WALL

## Mass Gravity Retaining Wall



OPTIONAL R.C. INFILL

# TERRAFORCE®

The original, reversible, hollow core retaining block

L22



LIGHT RETAINING AND 4X4 STAIRS



DOMESTIC LANDSCAPING



LIGHT EARTH RETAINING IN FULL BLOOM



PLANT SUPPORTIVE SLOPE PROTECTION



DO-IT-YOURSELF INSTALLATION



GREEN SEATING ARENA AND STAIRS